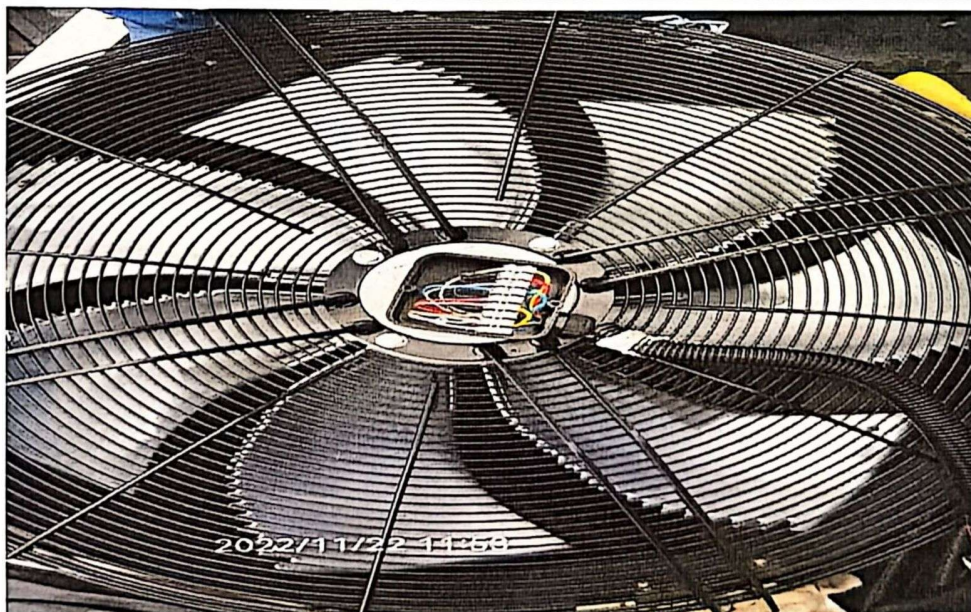
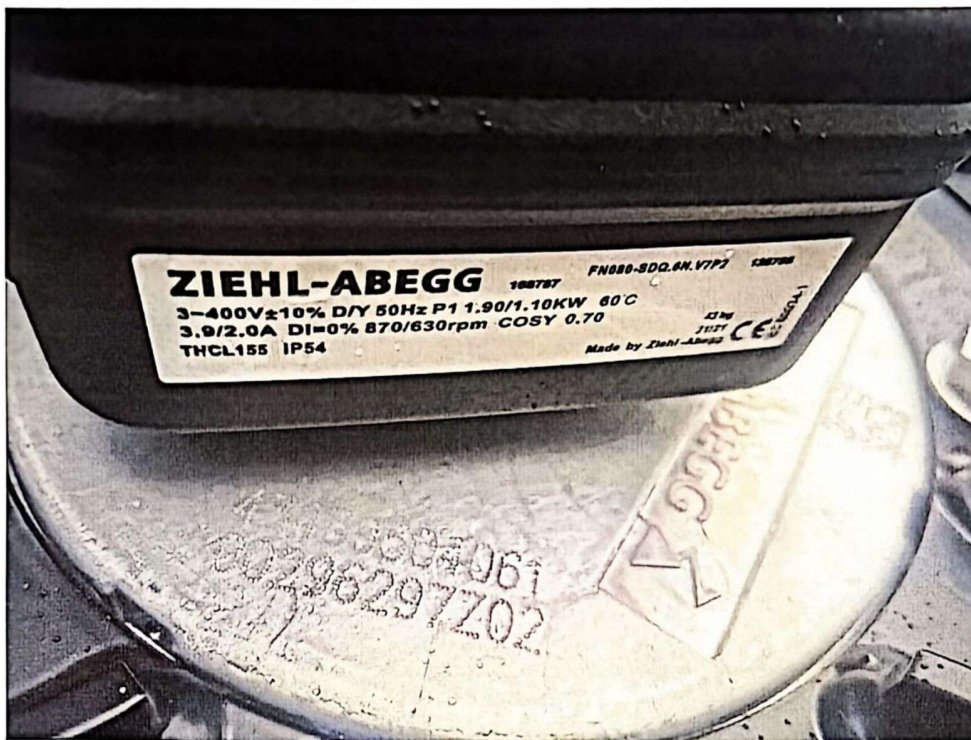


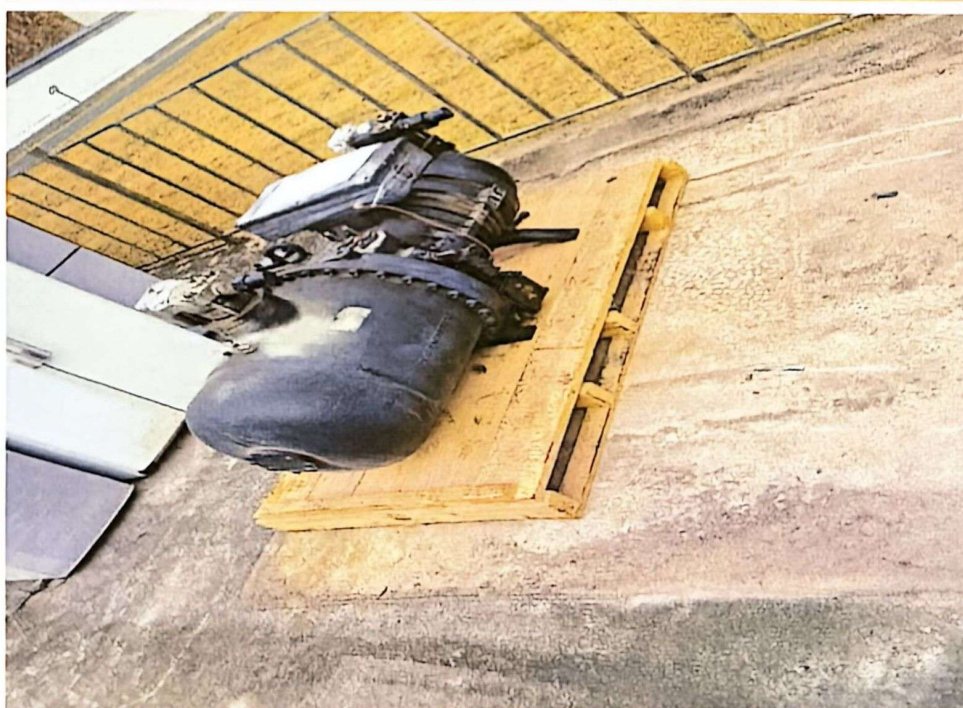


广州局C类国产备品补仓-Y25空调备品备件采购问 题澄清-实物照片

1、技术规范书序号1 冷凝风机，型号FN080-SDQ.6N.V7P5:



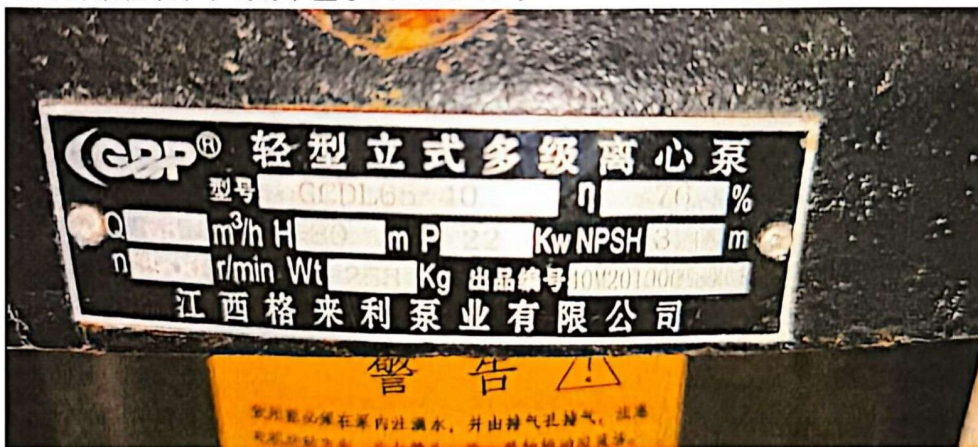
2、技术规范书序号2 螺杆式制冷压缩机，系列：RefComp；型号：SRC-S-503-LZ



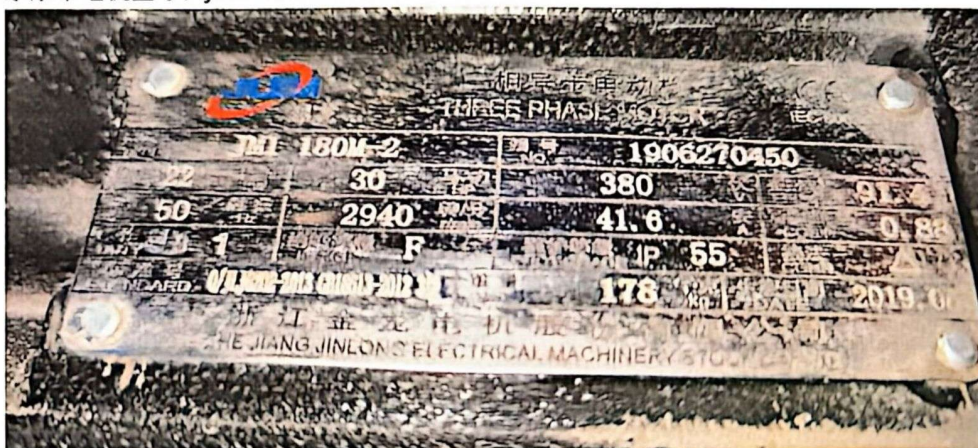
3、技术规范书序号3 触摸屏，型号6AV6 642-0AA11-0AX1:



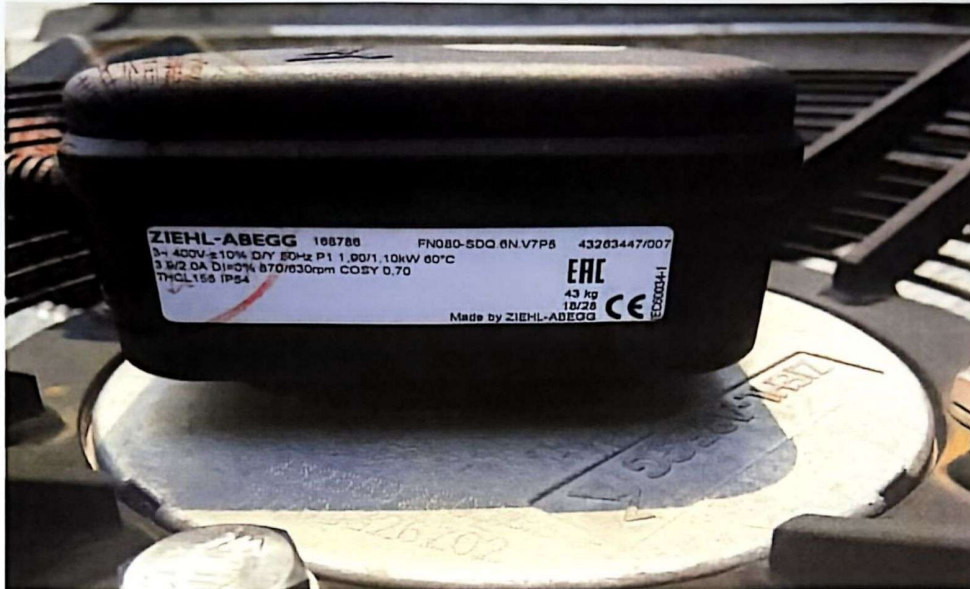
4、技术规范书序号4水泵，型号GCDL65-40：



水泵带电机型号：JM1 180M-2



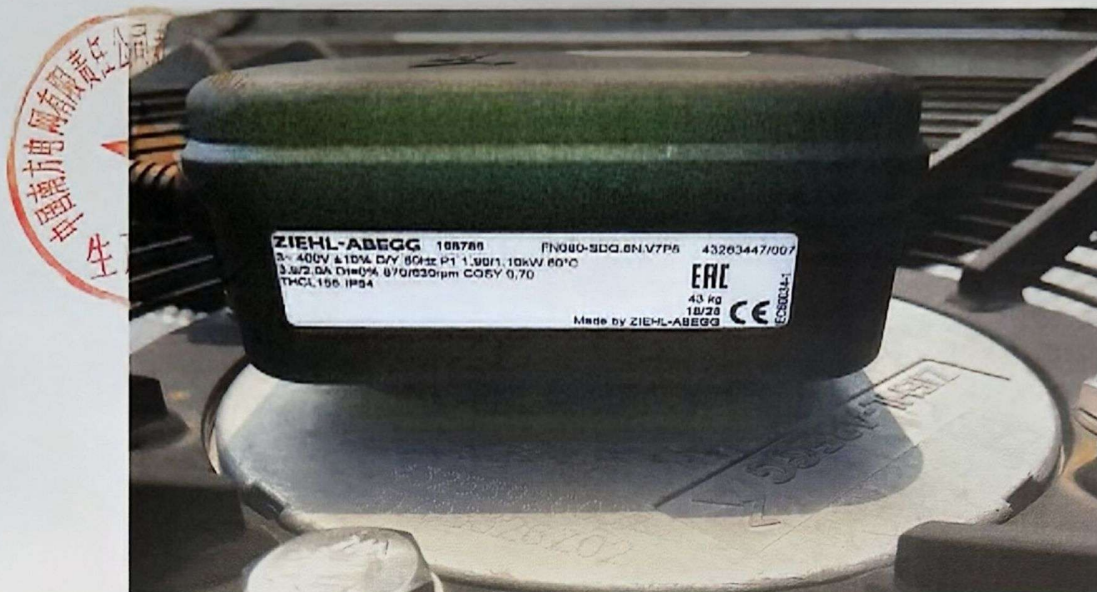
5、技术规范书序号5冷凝风机，型号：FN080-SDQ.6N.V7P5



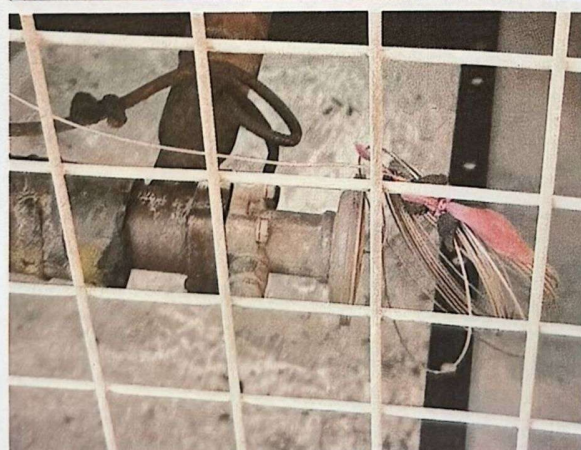
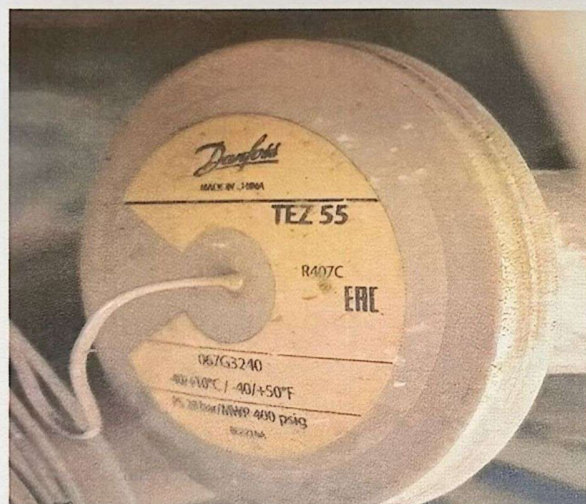
6、技术规范书序号6冷凝风机，型号：FN080-SDQ.6N.V7P5



7、技术规范书序号7通风机，型号：DDF2.5D



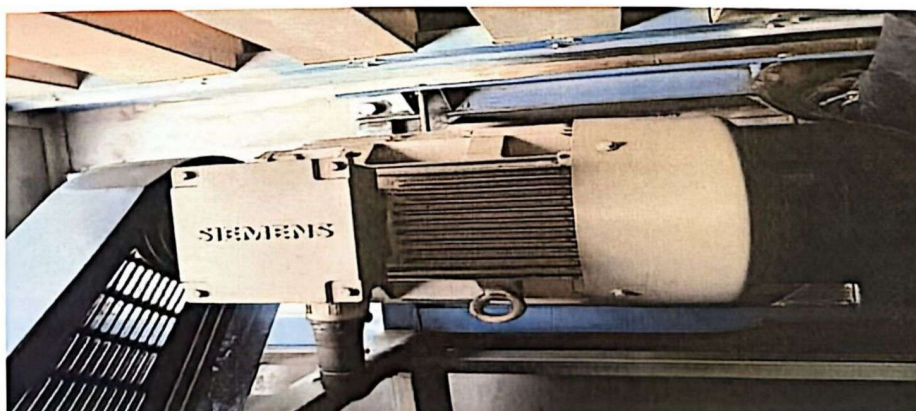
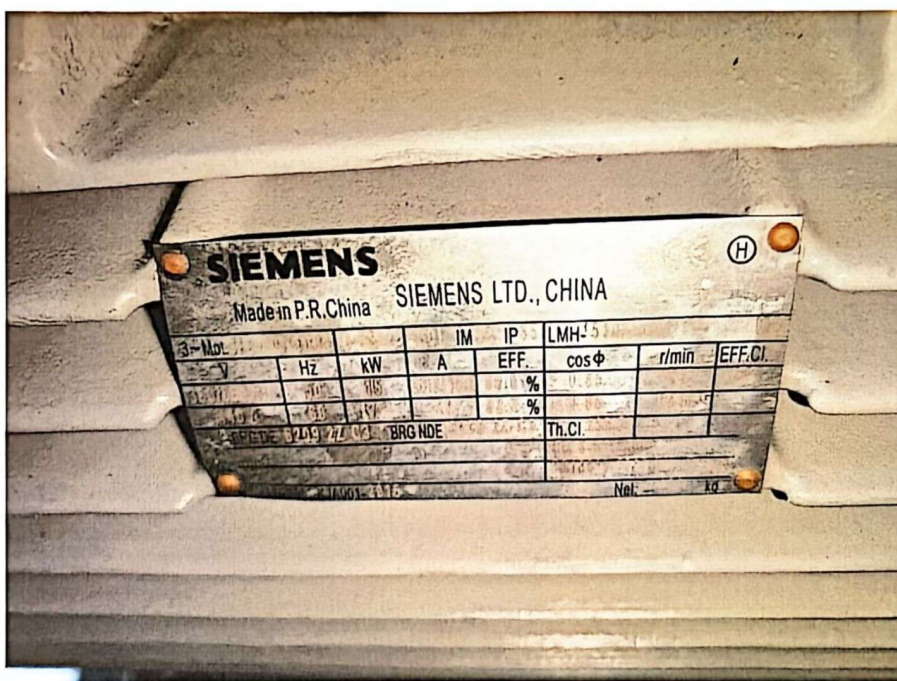
10、技术规范书序号10热力膨胀阀，型号：R407 TEZ55



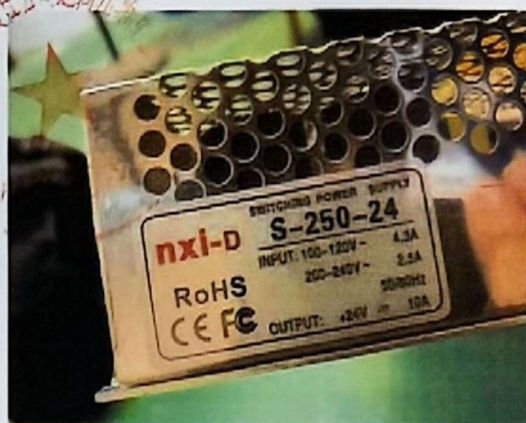
11、技术规范书序号11电磁阀，型号：FDF32MG-13/8



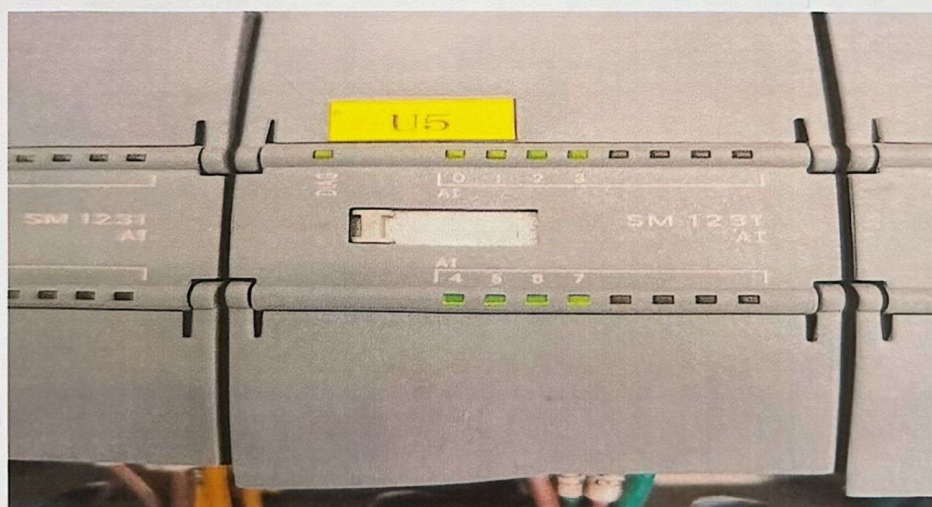
12、技术规范书序号12电机，型号：1LG0166-4AA70-Z

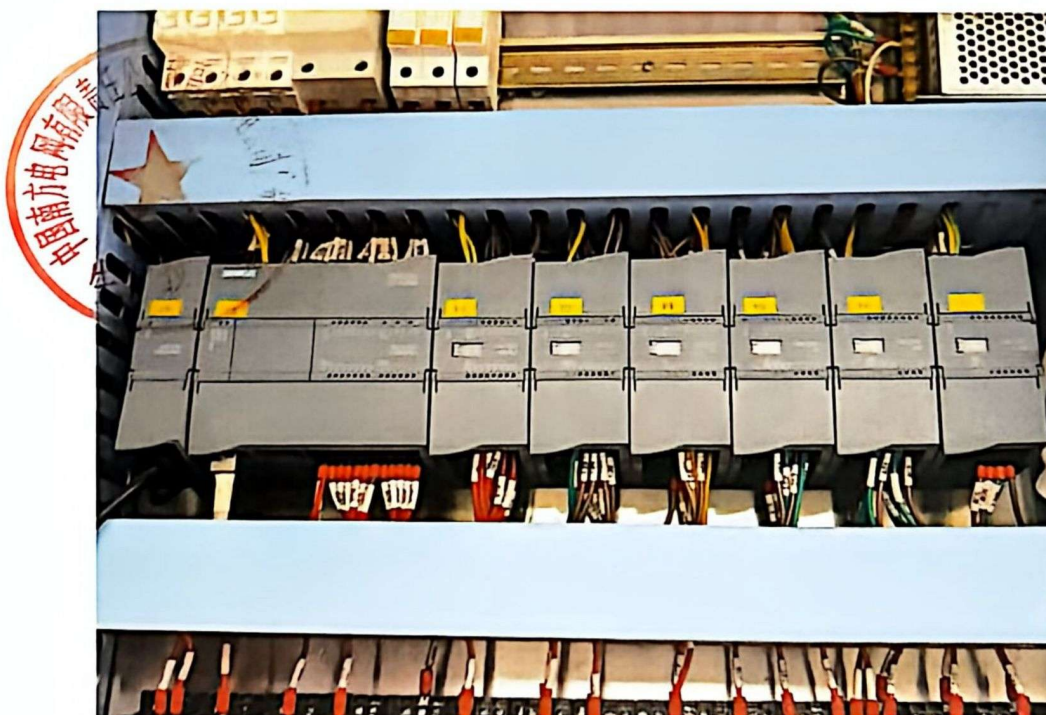


13、技术规范书序号13电源模块，型号：S-250-24

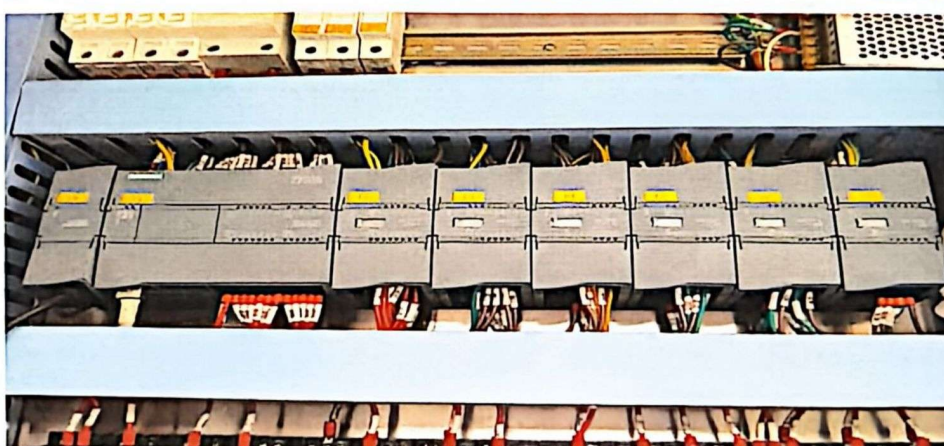


14、技术规范书序号14 PLC模块，型号：S7-1200 SM1231 AI



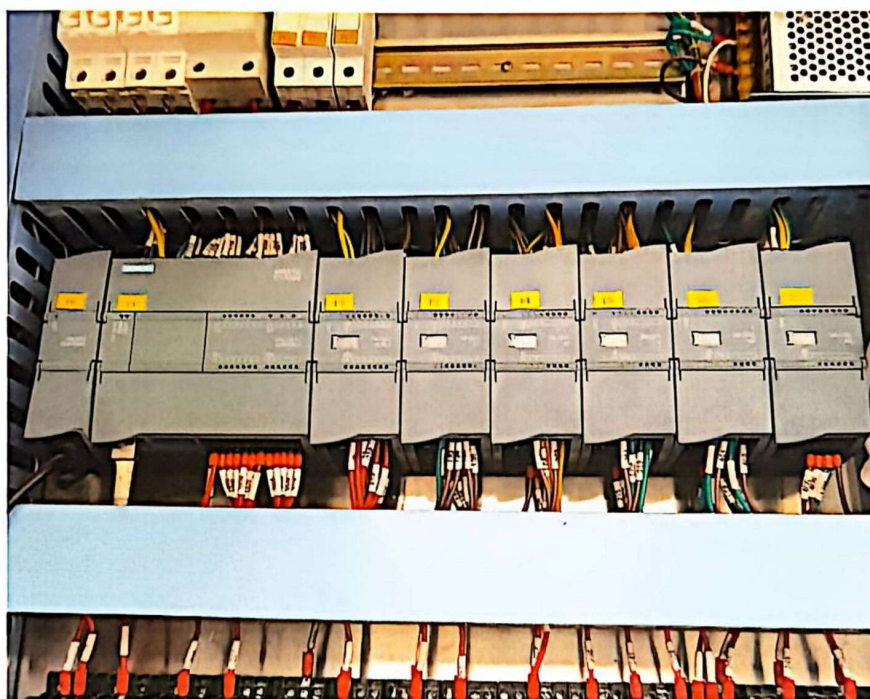


15、技术规范书序号15 PLC模块，型号：S7-1200 SM1232 AQ

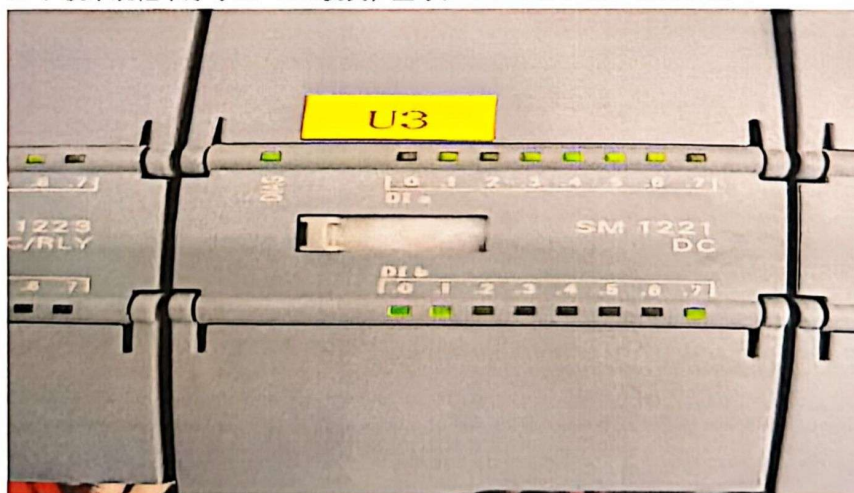




16、技术规范书序号16 PLC模块，型号：S7-1200 SM 1223 DC/RCY



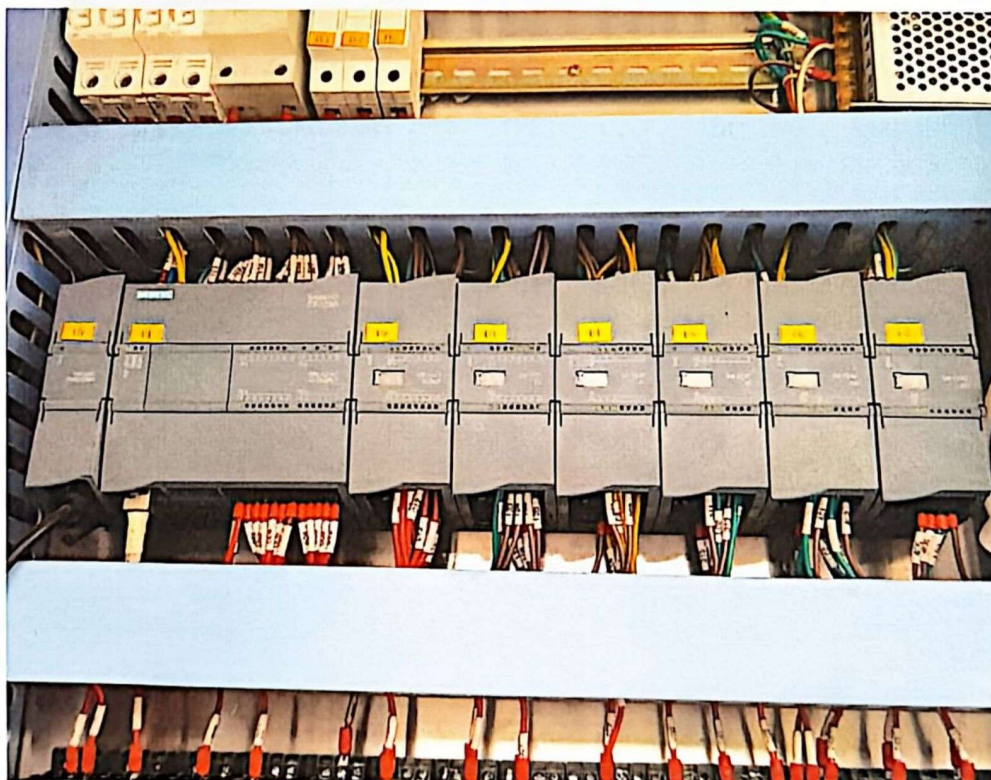
17、技术规范书序号17 PLC模块，型号：S7-1200 SM 1221 DI



中国南方电网有限责任公司
生产维护部



18、技术规范书序号18 PLC模块，型号：S7-1200 CPU 1214C

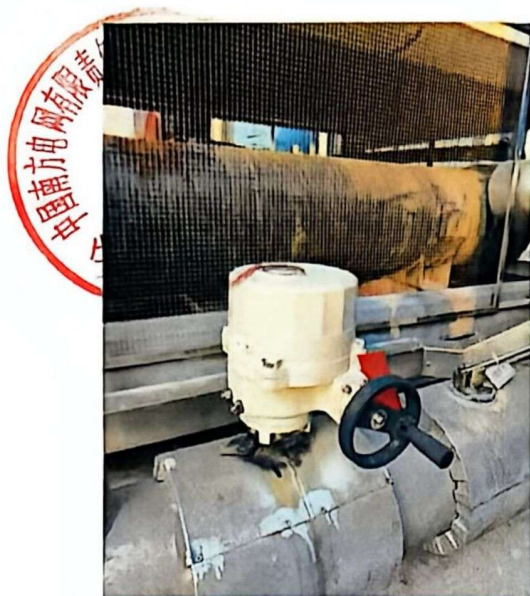


19、技术规范书序号19电动蝶阀，型号：SQL321B25

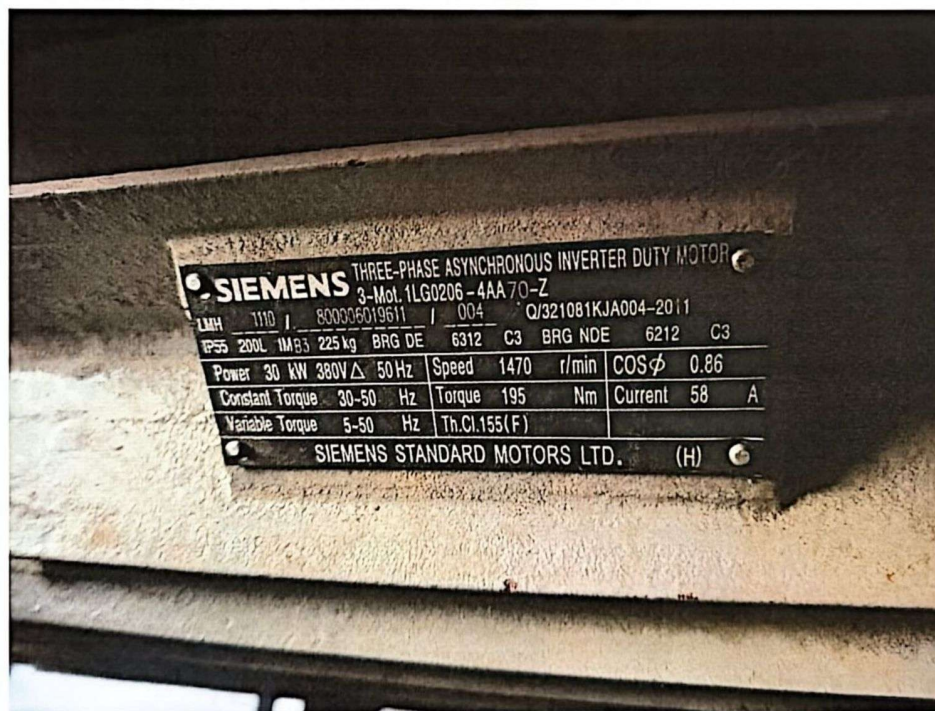


20、技术规范书序号20电动蝶阀，型号：SQL321B50





21、技术规范书序号21电机，型号： 1LG0206-4AA70-Z





22、技术规范书序号22喷液控制器，型号：SDC15 C15TC0TA0100



23、技术规范书序号23电加热控制器，型号：3PCW-300A

